



October 17, 2006

MEMORANDUM TO TEAM LEADERS AND CONSULTANTS

SUBJECT: End Bent/End Wall Reinforcing Steel

Prior to the pouring of the end wall concrete, the ends of straight reinforcing steel, projecting vertically from the end bent cap, present an impalement hazard to workers. To eliminate the hazard, the Contractor must use protective devices to cover the ends of the bars. Therefore, whenever it is practical to do so, detail a standard 180 degree hook at the end of the projecting reinforcing steel. See the attached example showing this preferred detail.

The requirements of this memorandum are considered to be a supplement to the requirements of the *SCDOT Bridge Design Manual*. The *Manual* will be updated at a later date to reflect these requirements.

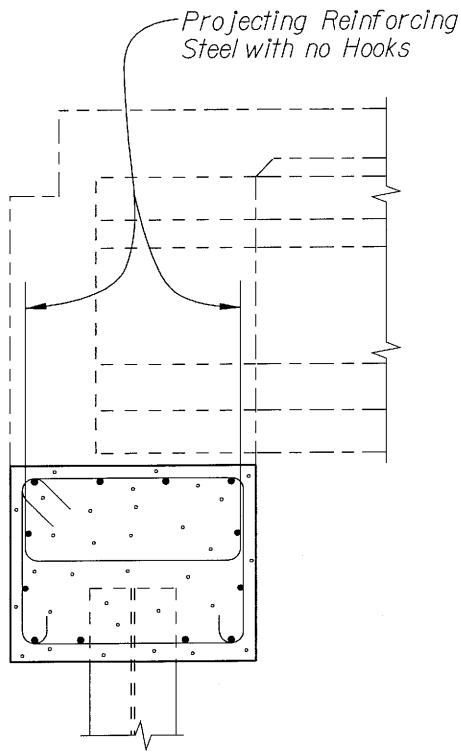
Mitchell D. Metts, P.E.
Bridge Design Engineer

Attachment

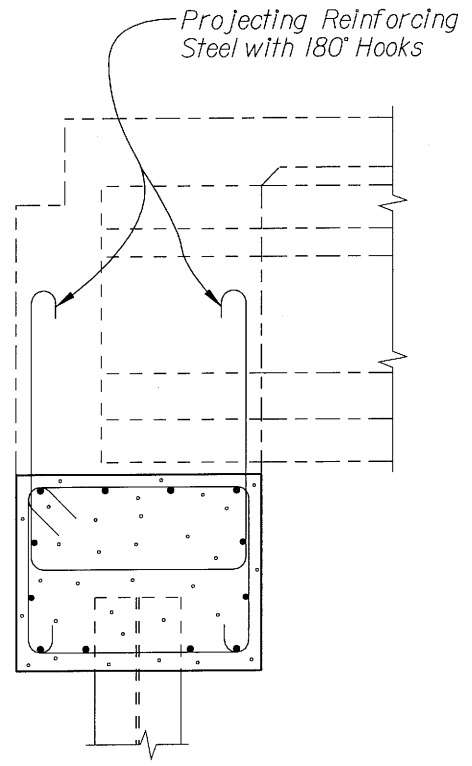
cc: Assistant Bridge Design Engineers
Bridge Construction Engineer
Bridge Maintenance Engineer
FHWA Structural Engineer

File: PC/BWB





DETAIL WITH STRAIGHT REINFORCING STEEL



PREFERRED DETAIL WITH HOOKS

SECTION THRU END BENT CAP

Note:
 Reinforcing steel arrangement is shown to illustrate the use of the 180° hooks only. Reinforcing steel details will vary depending on items such as end wall dimensions, girder size, girder type, and loading requirements.