



South Carolina
Department of Transportation

955 Park Street
Post Office Box 191
Columbia, South Carolina 29202-0191

Office of the Director
(803) 737-1302 • Fax (803) 737-2038

Deputy Director of Engineering
(803) 737-1314 • Fax (803) 737-2038

Deputy Director of Finance and Administration
(803) 737-1240 • Fax (803) 737-1719

Deputy Director of Mass Transit
(803) 737-9720 • Fax (803) 737-9739

DM0996

August 5, 1996

MEMORANDUM TO GROUP LEADERS & CONSULTANTS

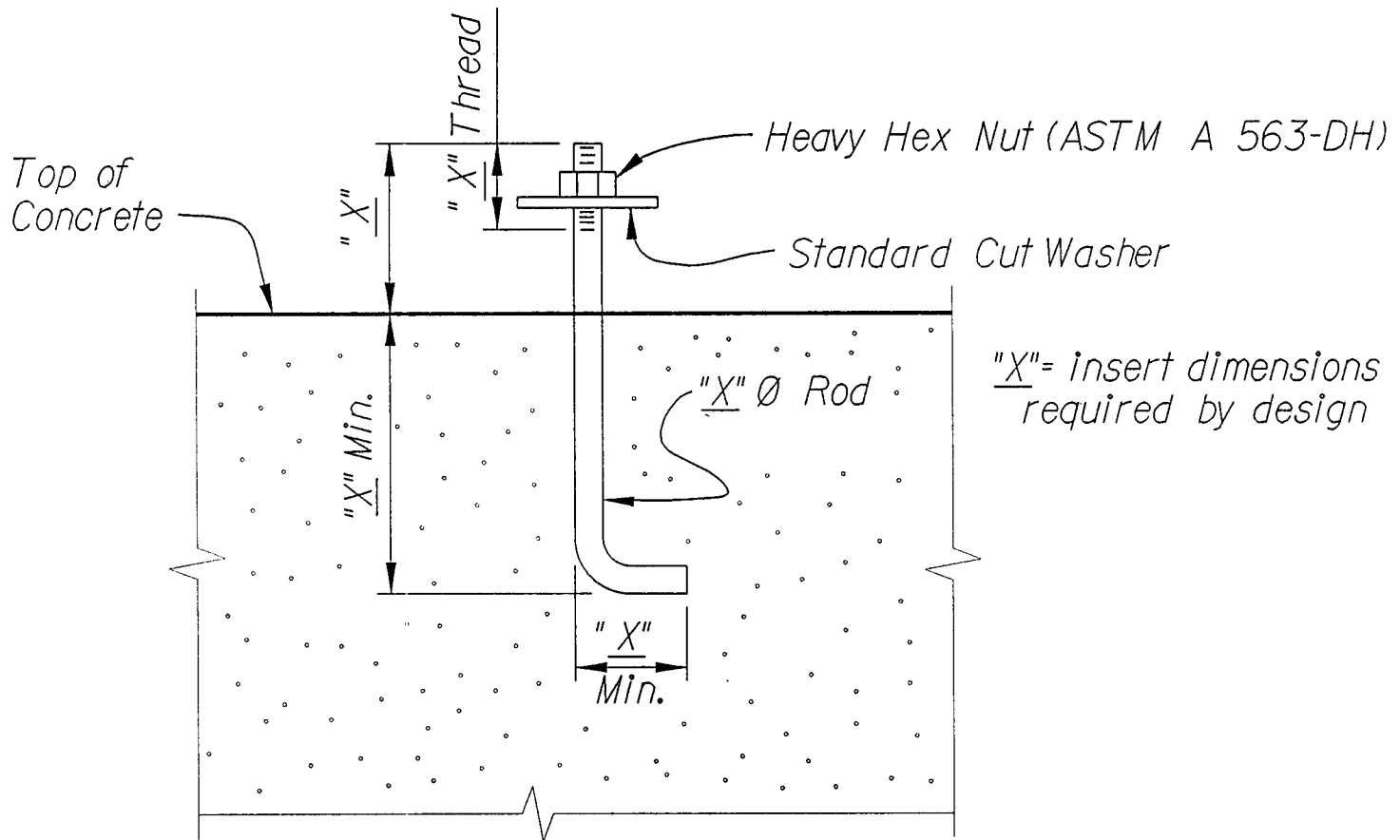
SUBJECT: Anchor Bolt Details

The attached "Anchor Bolt Details" are to be used when detailing Anchor Bolts. The dimensions shown as "X" should be removed and the Detailer must insert the proper dimensions required by the project design requirements.

Projects which have been completed need not be revised to reflect these requirements.

Rocque L. Kneece
Bridge Design Engineer

cc: Assistant Bridge Design Engineers



ANCHOR BOLT DETAILS

NOTES:

For length and number of anchor bolt assemblies required see reinforcing steel schedule on Bent sheets.

Anchor bolts shall conform with ASTM F 1554 (Gr.36).

Anchor bolts and nuts shall be shipped assembled.