

VOLVO INTERCHANGE PROJECT UPDATE

FEBRUARY 2019

PROJECT OVERVIEW

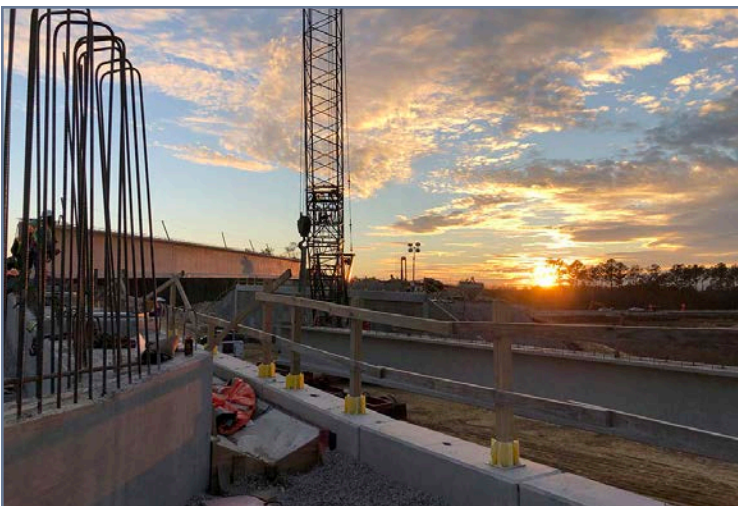
The SCDOT is constructing a new three-leg directional interchange along I-26 in Berkeley County, South Carolina. The interchange will provide access from I-26 to the new Volvo Car Drive which leads to Camp Hall Commerce Park and the Volvo facility. The new interchange will be located along I-26 at approximate mile marker 189 which is approximately two (2) miles east of SC 27/Ridgeville Road (exit 187) and approximately five (5) miles west of Jedburg Road (exit 194). The proposed interchange includes both at-grade and flyover ramps.



Crew places stone in exit lanes in preparation for paving.

PROGRESS UPDATE

- ❖ All bridge beams are in place, and crews are installing steel reinforcement for the concrete decks.
- ❖ Stone is being placed alongside I-26 to prepare for the paving of exit lanes.
- ❖ Continuing work on drain pipe installation to improve the flow of stormwater from the highway.
- ❖ A new fence is being installed on both sides of I-26.



The Volvo Interchange crew enjoys a Lowcountry sunset as work wraps up on bridge beam placement.



Installation of steel reinforcement for the concrete decks.

PROJECT CONTACTS

Sarah Gaffney
SCDOT Resident Construction Engineer
843-514-9847

Christopher Conerly
Conti Project Manager
985-791-3213

